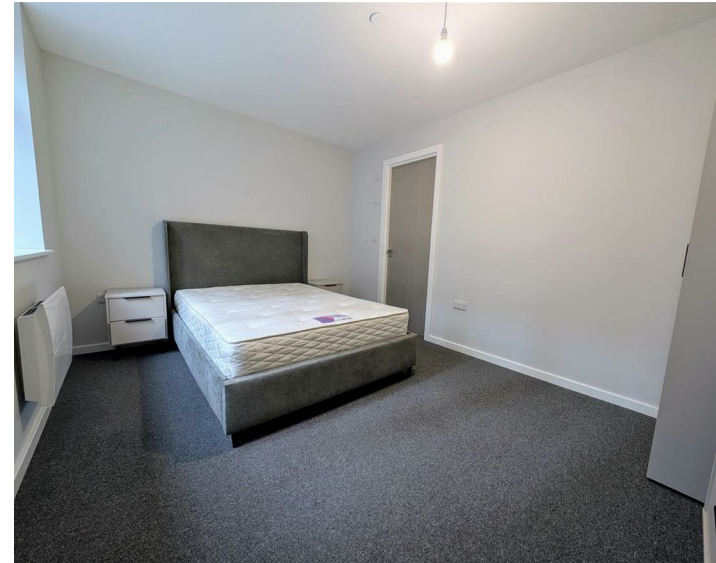
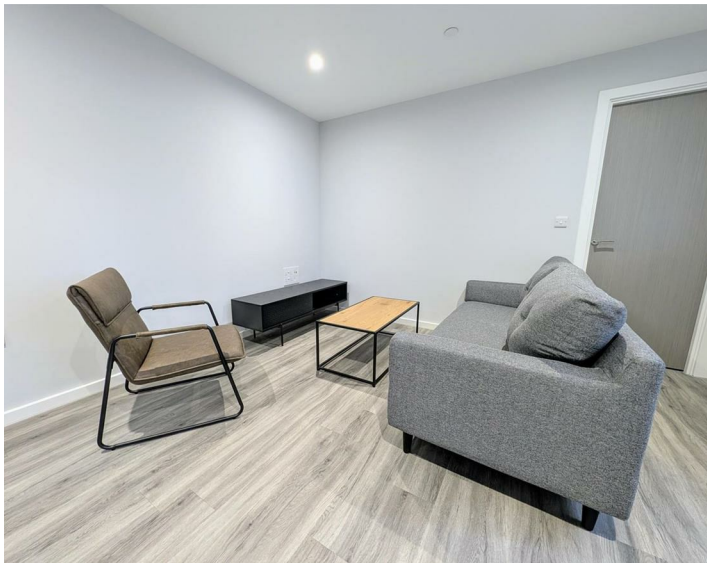




Apt 30, All Six House Derby Square, Liverpool, L2 7AB
£1,375 Per Month

www.
cityresidential
.co.uk



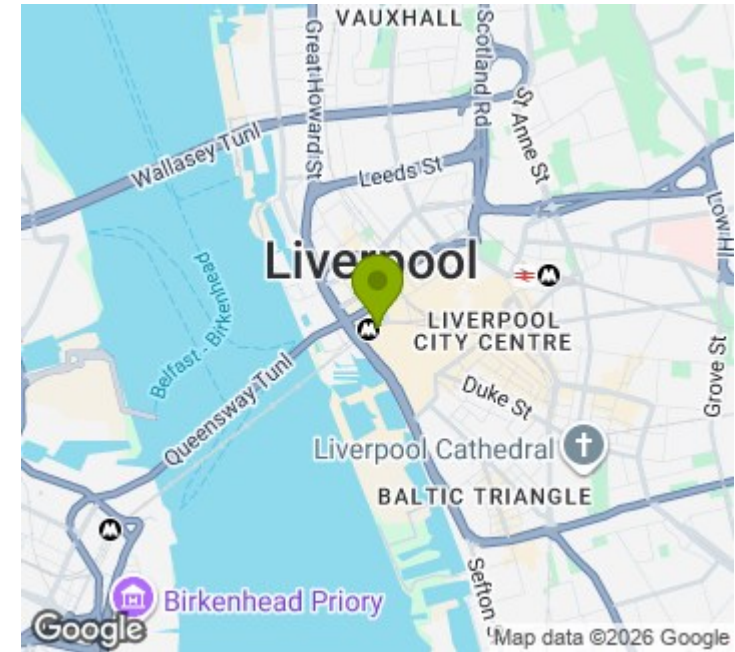
About the Property

AVAILABLE NOW! This exceptional two-bedroom apartment in the prestigious All Six House development offers the perfect blend of modern luxury and unbeatable convenience. Located on Derby Square, the development is excellently positioned for the extensive mix of bars, restaurants, shops and entertainment options located on both Castle Street and in the Liverpool One shopping centre. The development also benefits from excellent transport links with James Street Station being literally on your door step.

The apartment briefly comprises; spacious open-plan living and dining area, fully fitted contemporary kitchen which is fitted with high-quality integrated appliances, two generously sized double bedrooms, with the master benefiting from its own en-suite shower room and a well-appointed main bathroom

Contact us today on 0151 231 6100 to arrange a viewing!

- Immediate Move In
- Fully Furnished Two Bedroom Apartment
- Coworking Space & Bike Storage
- Council Tax Band - C
- EPC - D
- Deposit - £1586
- Head lease restriction: no pets



Energy Efficiency Rating

	Current	Potential
<i>Very energy efficient - lower running costs</i>		
(92 plus) A		
(81-91) B		
(69-80) C		
(55-68) D		
(39-54) E		
(21-38) F		
(1-20) G		
<i>Not energy efficient - higher running costs</i>		
England & Wales	EU Directive 2002/91/EC	



City Residential

81/87 Victoria Street, The Old Haymarket, Liverpool L1 6DG

T: 0151 231 6100 F: 0151 231 6105

E: sales@cityresidential.co.uk



WWW.
cityresidential
.co.uk